

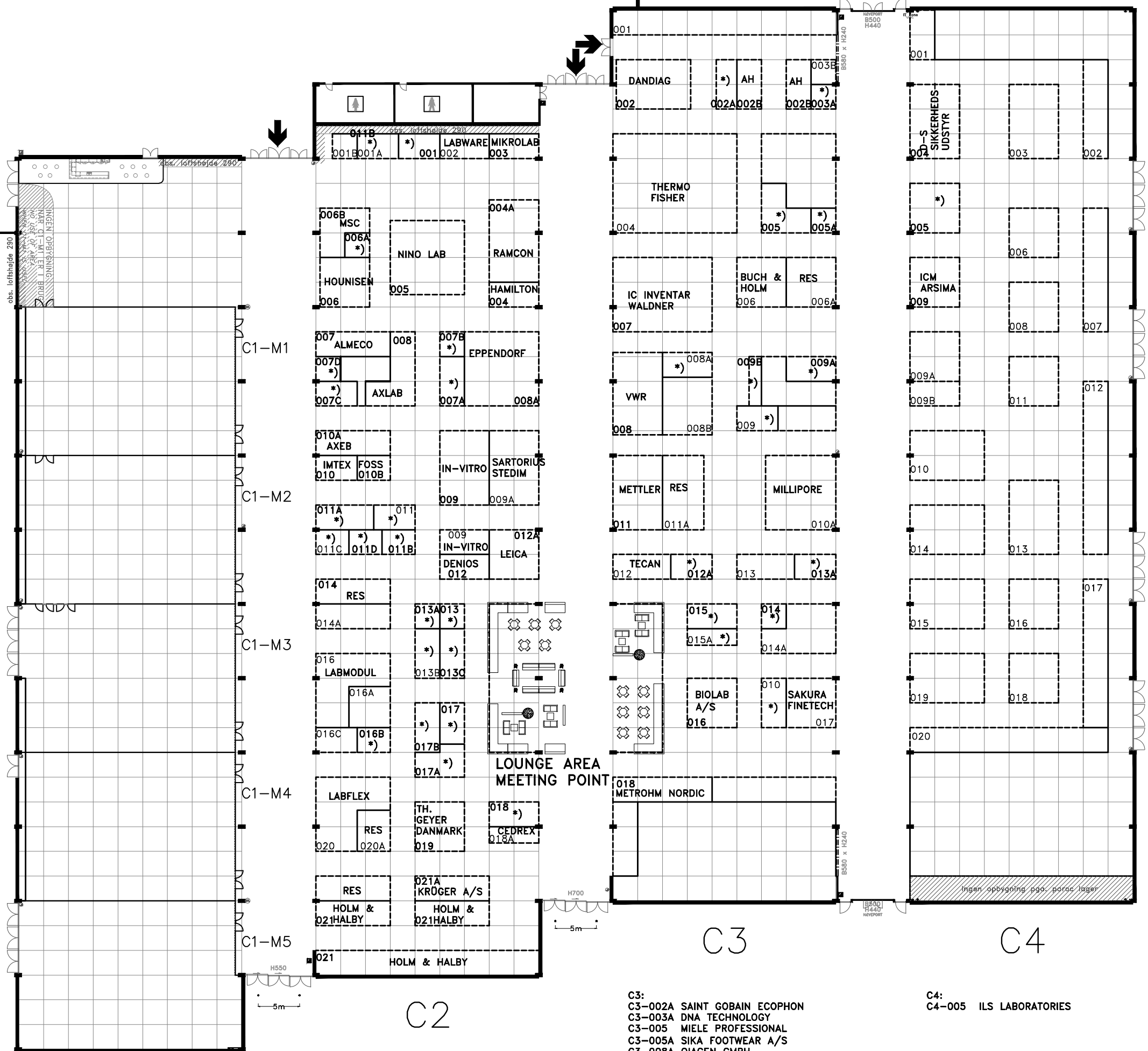
C1

C2

C3

C4

CENTERHAL UDENDØRSAREAL



Plan Floor plan

C1

C2

C3

C4

- C2:
- C2-001A ICU SCANDINAVIA AB
 - C2-001 BROCH & MICHELSEN
 - C2-006A ZINSSER ANALYTICAL GMBH
 - C2-007A GETINGE DANMARK
 - C2-007B GANKET
 - C2-007C KEM-EN-TEC
 - C2-007D DASGIP
 - C2-011 SAVEEN & WERNER GROUP
 - C2-011A BIO NORDIKA DENMARK A/S
 - C2-011B APPLIED CRITICAL FLUIDS GMBH
 - C2-011C ETISOFT NORDIC
 - C2-011D JM SEPARATIONS BV
 - C2-013 TEMP-TEAM

- C2-013A COPENHAGEN BIOTECH SUPPLY
- C2-013B RESERVERET
 - C2-013C LECO CORPORATION SVENSKA
 - C2-016B INSATECH A/S
 - C2-017 LGC STANDARDS AB
 - C2-017A DFA INSTRUMENTS
 - C2-017B DORTE EGELUND
 - C2-018 TRIOLAB

- C3:
- C3-002A SAINT GOBAIN ECOPHON
 - C3-003A DNA TECHNOLOGY
 - C3-005 MIELE PROFESSIONAL
 - C3-005A SIKA FOOTWEAR A/S
 - C3-008A QIAGEN GMBH
 - C3-009 BIO-RAD
 - C3-009A BERENDSEN A/S
 - C3-009B NORDIC BIOSITE
 - C3-010 SYMPATEC GMBH
 - C3-012A MD SCIENTIFIC
 - C3-013A LABSUPPORT
 - C3-014 LONZA COLOGNE GMBH
 - C3-015 NORDIC BIOLABS
 - C3-015A MICLEV AB

- C4:
- C4-005 ILS LABORATORIES

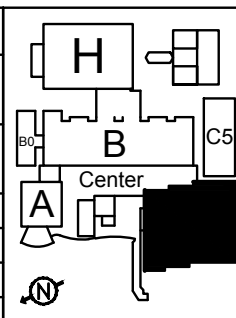
Modul 3x3m
module 3x3m = 9sq.m

Målestok/Scale 1:12m

- Søjle Concrete pillar 40x80 cm
- Slangevinder Fire-hose winder
- Brandskab Fire-hose 75x25xH85 cm

El og vand fremføres fra gulv
Electrics and plumbing supplied from sub-floor service ducts

Bella Center Teknisk afdeling	
Subject	SALESPLAN
Drw:	SCANLAB 2012
File:	C912 SCANLAB
Arch.:	
Rev.:	20120220
Drw.:	MACA
Scale:	



Bella Center
Hall C

This drawing shows:
Scanlab

25-27 september 2012